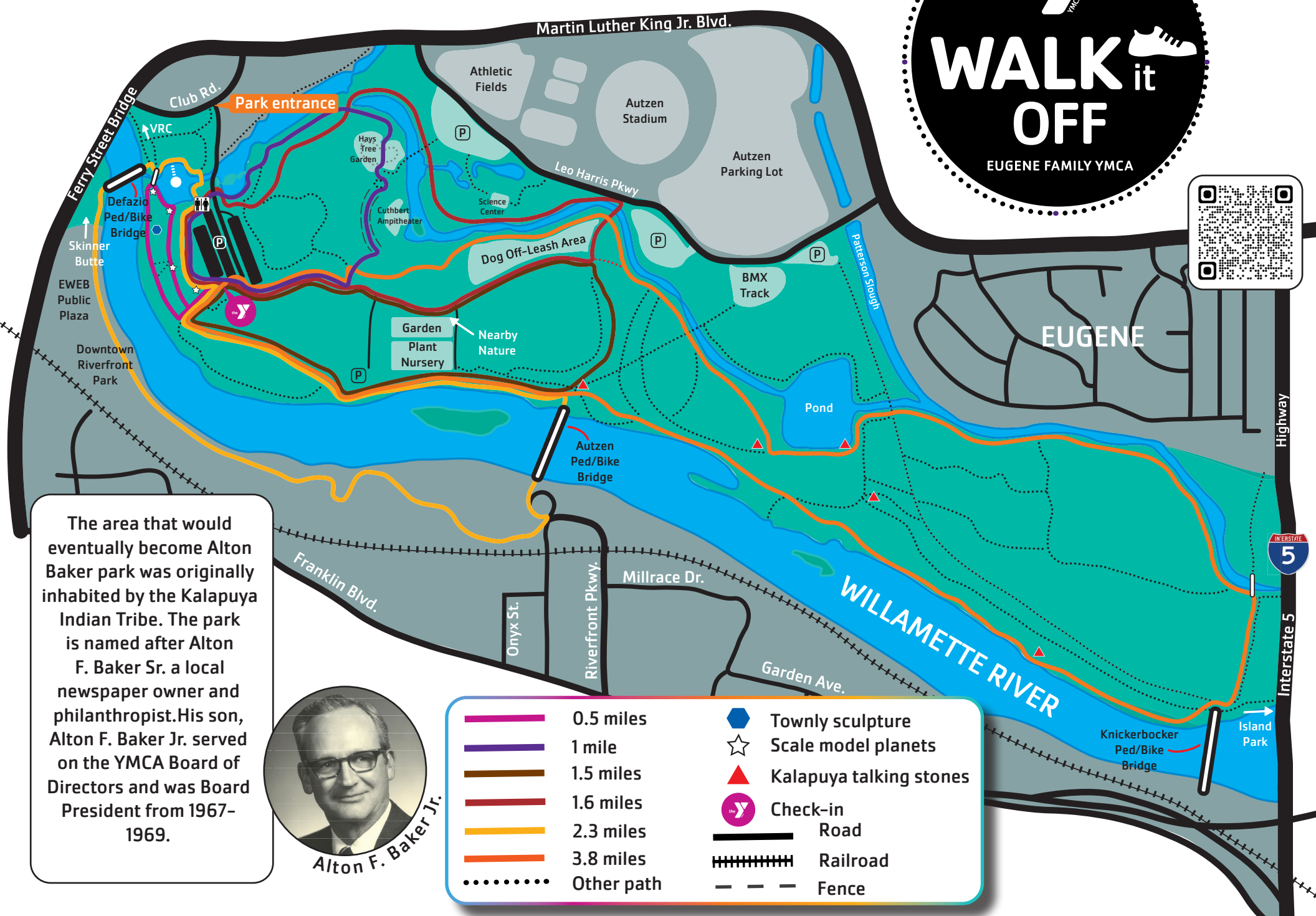
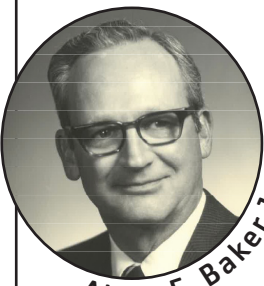


ALTON BAKER PARK



The area that would eventually become Alton Baker park was originally inhabited by the Kalapuya Indian Tribe. The park is named after Alton F. Baker Sr. a local newspaper owner and philanthropist. His son, Alton F. Baker Jr. served on the YMCA Board of Directors and was Board President from 1967-1969.



Alton F. Baker Jr.

- | | | | |
|--|------------|--|-------------------------|
| | 0.5 miles | | Townly sculpture |
| | 1 mile | | Scale model planets |
| | 1.5 miles | | Kalapuya talking stones |
| | 1.6 miles | | Check-in |
| | 2.3 miles | | Road |
| | 3.8 miles | | Railroad |
| | Other path | | Fence |

ALTON BAKER PARK



- | | | | |
|--|------------|--|-------------------------|
| | 0.5 miles | | Townly sculpture |
| | 1 mile | | Scale model planets |
| | 1.5 miles | | Kalapuya talking stones |
| | 1.6 miles | | Check-in |
| | 2.3 miles | | Road |
| | 3.8 miles | | Railroad |
| | Other path | | Fence |

THANK YOU SPONSORS!

- PeaceHealth
- 16 KMTR EUGENE
- 99-1 THE BEAT
- BIGFOOT
- MCKENZIE SEWON tell your story
- McKenzieMist Water Company
- WVCI WILLAMETTE VALLEY CANCER INSTITUTE AND RESEARCH CENTER
- Eugene Magazine